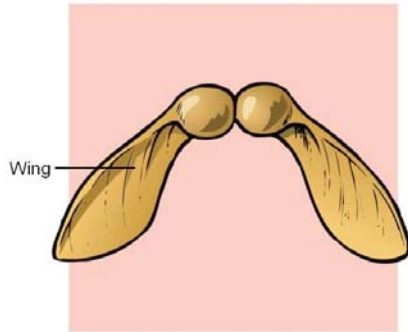
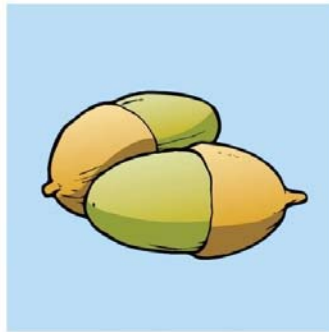


# 15 Seed dispersal

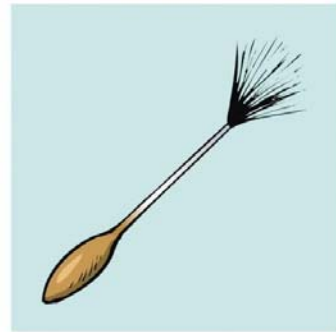
## Activity 1



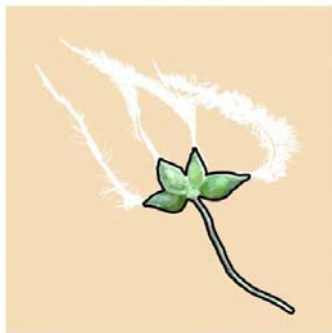
**A**



**B**



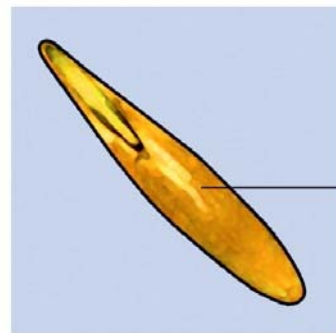
**C**



**D**



**E**



**F**

Look at the pictures of seeds above. Try to identify them using the following key:

- |   |     |                  |
|---|-----|------------------|
| 1. Does it have wings?                    | Yes | Go to 2          |
|   | No  | Go to 3          |
| 2. Does it only have one wing?            | Yes | It is ASH        |
|   | No  | It is SYCAMORE   |
| 3. Does a part of the seed look feathery? | Yes | Go to 4          |
|   | No  | Go to 5          |
| 4. Does it have one seed?                 | Yes | It is DANDELION  |
|   | No  | It is CLEMATIS   |
| 5. Does it have one seed?                 | Yes | It is ACORN      |
|   | No  | It is BLACKBERRY |

A = \_\_\_\_\_

B = \_\_\_\_\_

C = \_\_\_\_\_

D = \_\_\_\_\_

E = \_\_\_\_\_

F = \_\_\_\_\_

## Activity 2

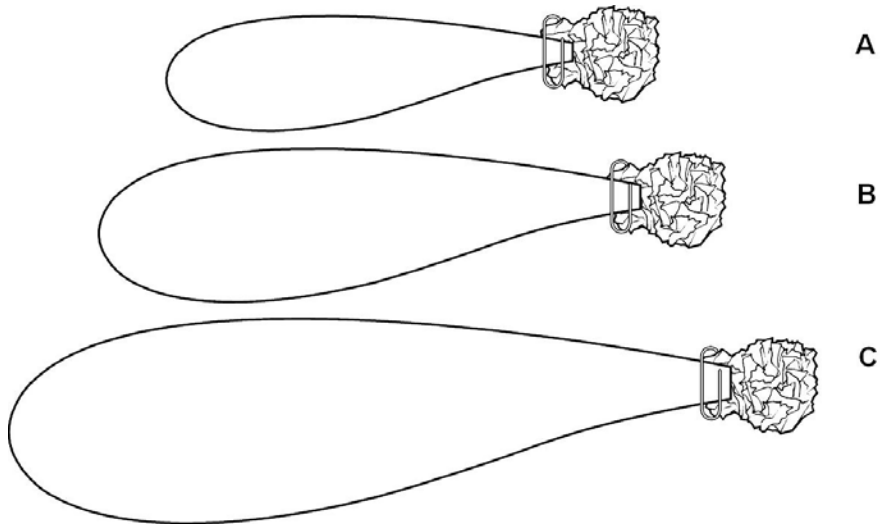
Seeds need to be dispersed so that they stand a better chance of growing into a new plant. This can be by water, wind, explosion and animals. Here is a diagram of a burdock. Explain how you think this seed is dispersed.



## Activity 3

Some seeds that are dispersed look a bit like a parachute so that wind can carry them far away from the parent plant.

Lara designed three seeds:



Explain why seeds need to be dispersed away from the parent plant.

Which do you think will be dispersed the furthest?

Give your reasons for that choice.

## **Challenge Seeds**

Some seeds are dispersed by water. Design a seed:

- That can travel in water. Remember that if seeds become waterlogged, they will sink
- That can be catapulted away from the parent plant